



## SUPPLIES

- 110lb card stock paper
- 7mil photo paper
- paper clip
- pen
- ruler
- craft knife
- scissors
- double sided tape (or glue)

### Optional

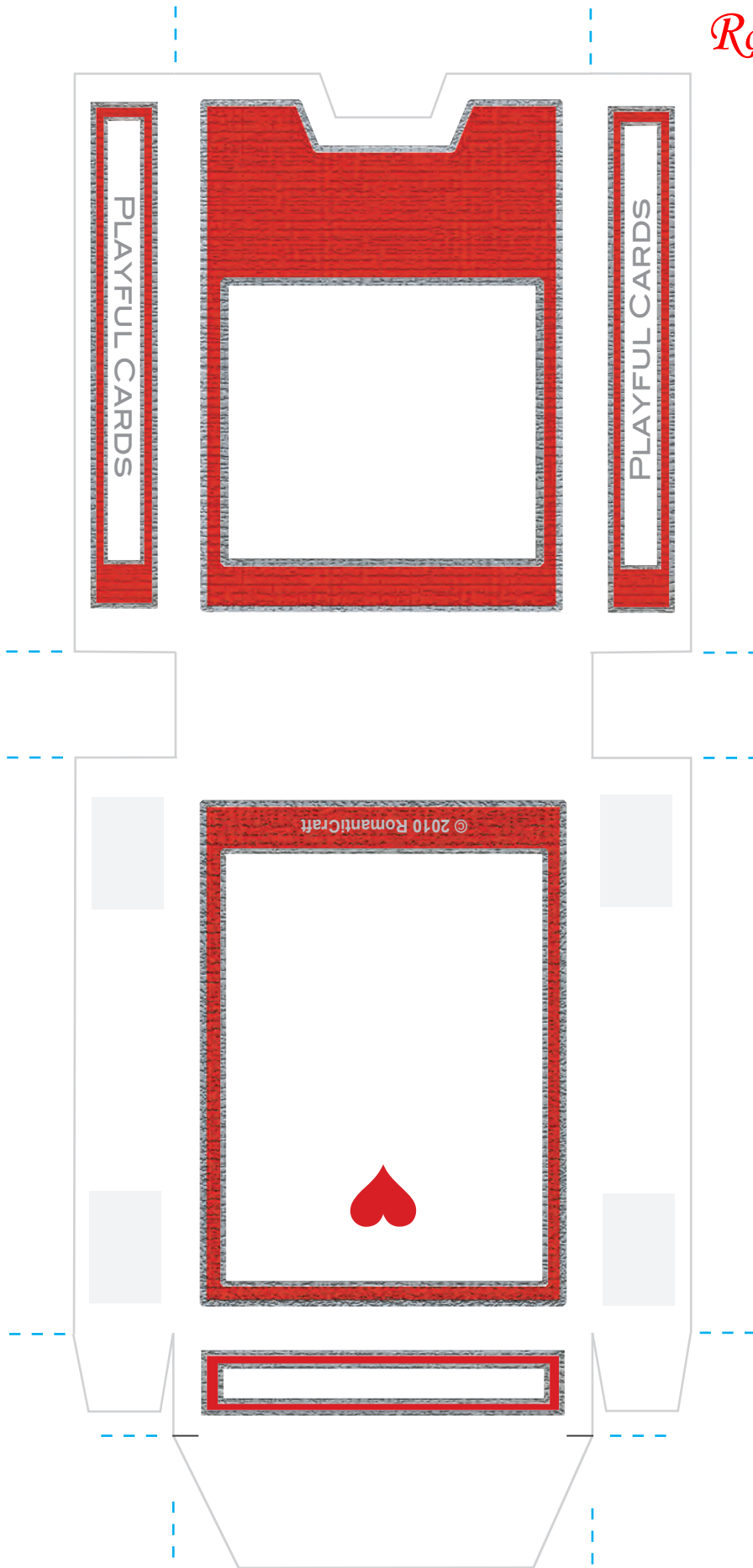
- cutting mat
- paper towel
- deck of cards

TIME

 30 minutes average

SKILL

 1 2 3



Follow all printer settings first before printing for best results.

 **Assembly Instructions**

(click to go back to detailed photo assembly instructions)

You can find more romantic crafts, gifts, ideas and resources  
at [RomantiCraft.com](http://RomantiCraft.com)

No part of this publication may be stored in a file sharing retrieval system, transmitted, modified or reproduced in any way, including but not limited to digital copying and printing for commercial use without permission. Private use only.

Copyright © 2010 RomantiCraft, LLC.  
All Rights Reserved